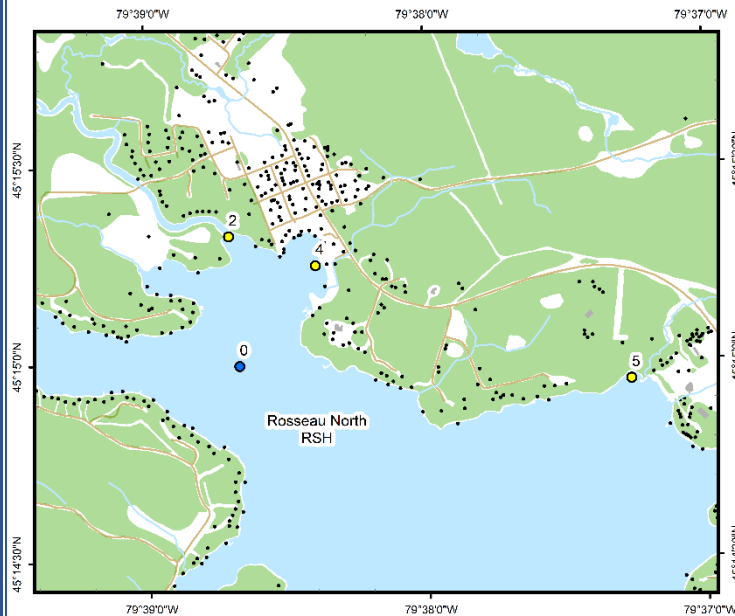


# Rosseau North (RSH)



## Area Description:

The Rosseau North sampling area includes several small bays (i.e., Rosseau Bay, Beley Bay, and Camerson Bay). The Village of Rosseau at the northern end of Lake Rosseau drains into the lake which also receives drainage from the Shadow River. The watershed is highly developed along the shoreline and upland areas including a marina, residential and agricultural properties. MLA monitoring of Rosseau North began in 2002.

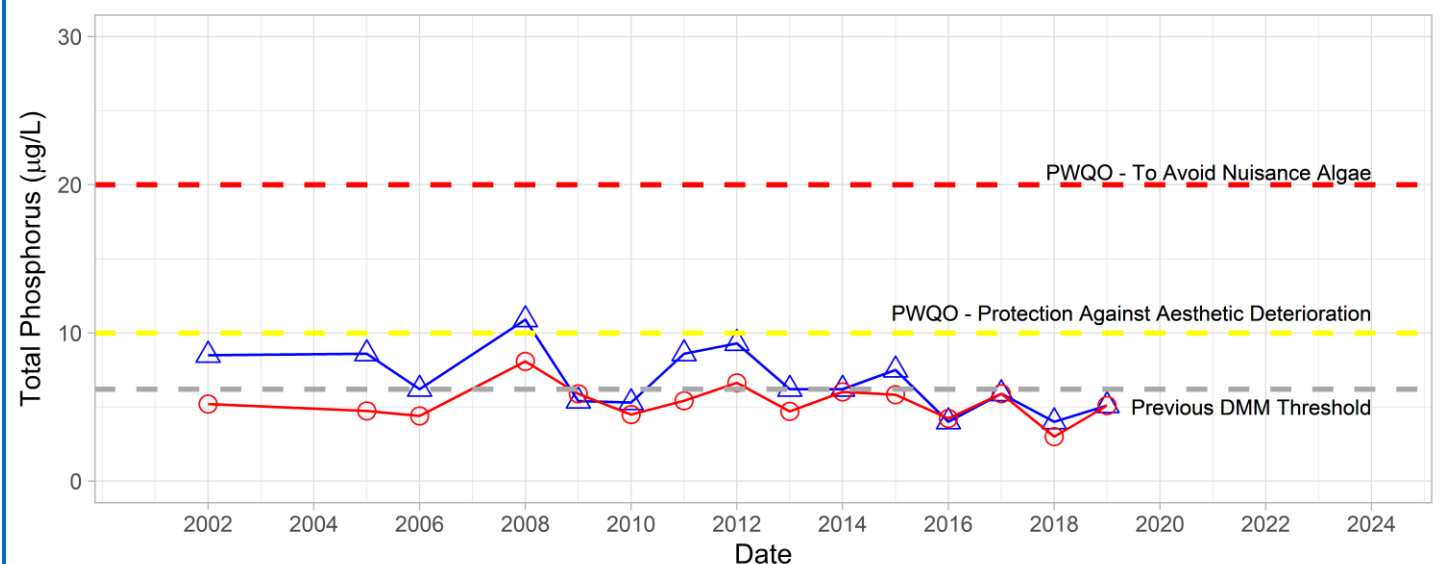
Volunteer Recognition: John & Sue Wessenger.

## 2021 Water Quality Results:

	Mean Secchi Disk (m)	Total Phosphorus ( $\mu\text{g/L}$ )		E. coli Yearly Geometric Mean (cfu/100mL)	Total Coliforms Yearly Geometric Mean (cfu/100 mL)
		Spring Turnover	Yearly Mean		
RSH-0	3.2	3.5			
RSH-2		3.0	4.1		
RSH-4		3.0			
RSH-5		3.4			

## Phosphorus at RSH-0

○ Yearly Mean (MLA)    △ Spring Turnover (MLA)



Note: Grubbs test indicates no outliers in spring or annual average total phosphorus data.



In 2021, the spring phosphorus concentrations at the deep-water station (RSH-0) were below the historic DMM threshold of 6.2 µg/L and Provincial Water Quality Monitoring Objectives for Protection Against Aesthetic Deterioration (10 µg/L) and Nuisance Algal Growth (20 µg/L). Nearshore monitoring of annual and spring phosphorus concentrations at RSH-2, 4, and 5 were the lowest recorded to date. *E. coli* samples were not collected in 2021. Average annual Secchi disk depth (3.2 m) was consistent with previous monitoring (1.9 – 5.1 m). **HESL recommends ongoing sampling to continue to monitor for long-term trends and emerging issues.**