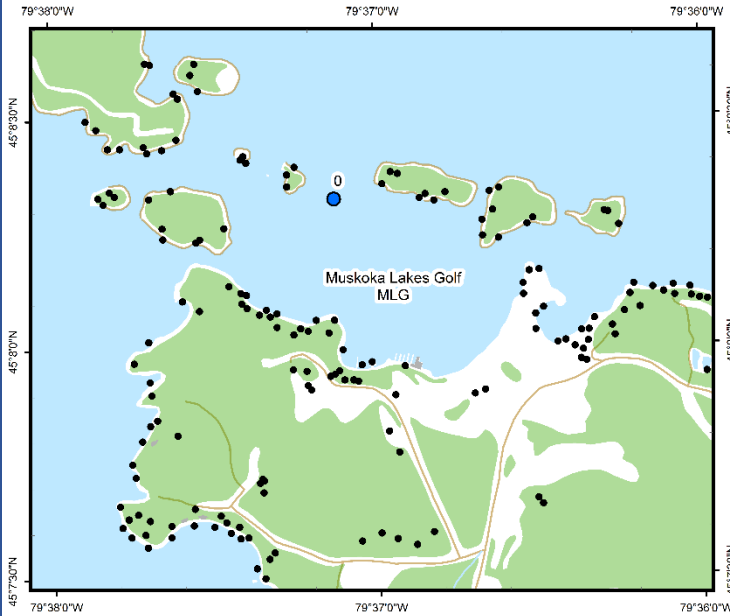




Muskoka Lakes Golf (MLG)



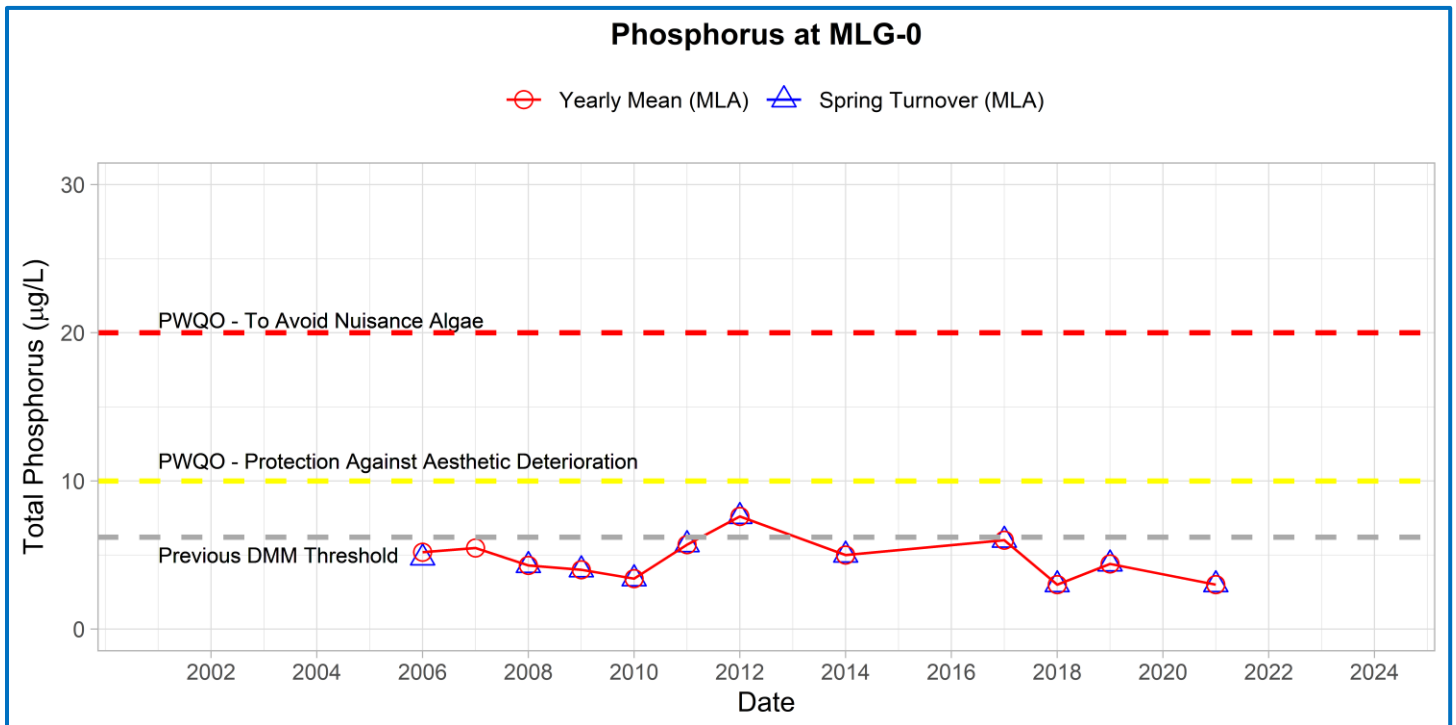
Area Description:

The Muskoka Lakes Golf & Country Club near the Town of Port Carling, along the southern shore of Lake Rosseau's main basin. The bay receives run-off from a golf course area which includes an associated clubhouse and marina. The bay also contains a large wetland that drains into the lake. The northwest winds result in substantial wave action along the southern shoreline of the bay.

Volunteer Recognition: Dianne & Ian Turnbull.

2021 Water Quality Results:

	Mean Secchi Disk (m)	Total Phosphorus ($\mu\text{g/L}$)		E. coli Yearly Geometric Mean (cfu/100mL)	Total Coliforms Yearly Geometric Mean (cfu/100 mL)
		Spring Turnover	Yearly Mean		
MLG-0	3.4	3.0			



Note: Grubbs test indicates no Spring and Annual Total Phosphorus data were outliers.



In 2021, the spring phosphorus concentrations at the deep-water station (MLG-0) was below the historic DMM threshold of 6.2 µg/L and Provincial Water Quality Monitoring Objectives for Protection Against Aesthetic Deterioration (10 µg/L) and Nuisance Algal Growth (20 µg/L). Average annual Secchi disk depth (3.4 m) was consistent with previous monitoring (3.0 – 5.5 m). **HESL recommends ongoing sampling to continue to monitor for long-term trends and emerging issues.**