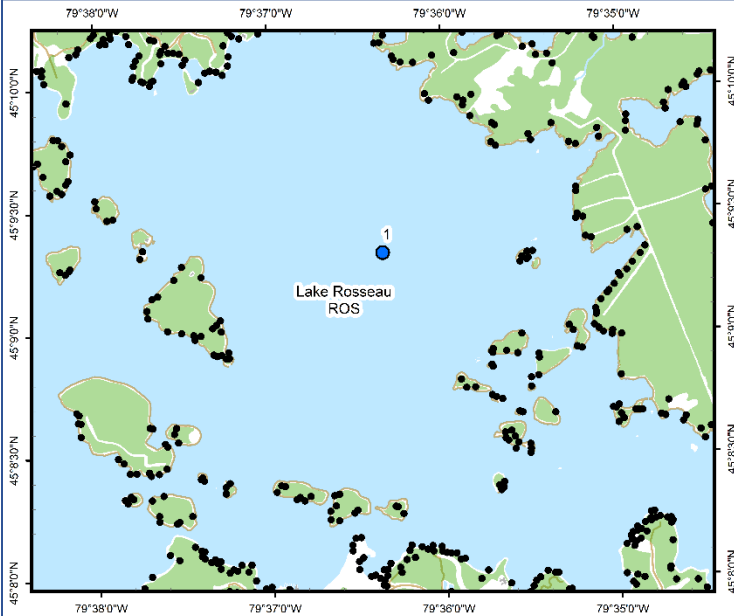


# Lake Rosseau (ROS)



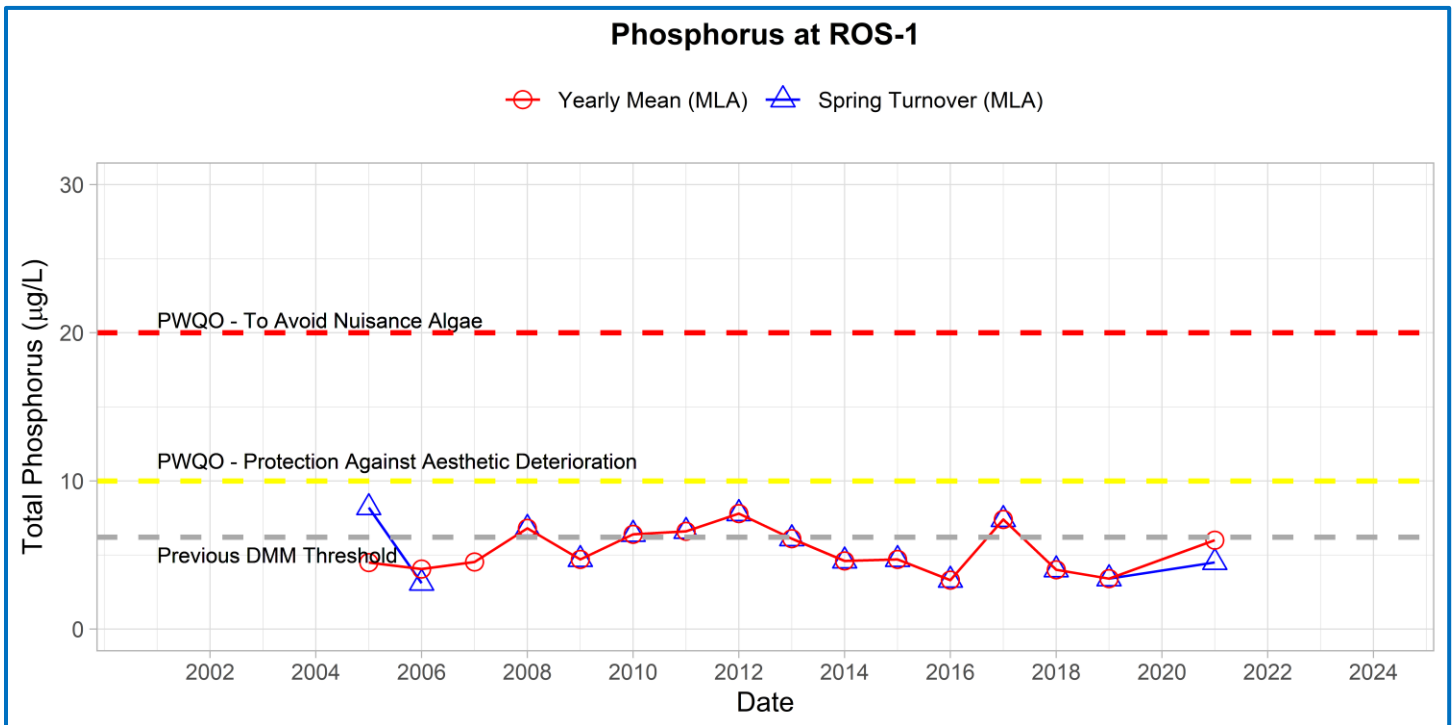
### Area Description:

The main basin of Lake Rosseau is 42.22 km<sup>2</sup> in area with a maximum depth of 60 m. The lake is classified as a coldwater lake and supports a naturally reproducing population of Lake Trout. Wetlands account for ~4% of the watershed. The watershed, excluding the lake itself is 37.13 km<sup>2</sup>. Lake Rosseau is not currently classified as vulnerable by the DMM. MLA monitoring of the main basin of Lake Rosseau began in 2005.

Volunteer Recognition: Christine Gillmore, Bob McCabe.

### 2021 Water Quality Results:

	Mean Secchi Disk (m)	Total Phosphorus (µg/L)		E. coli Yearly Geometric Mean (cfu/100mL)	Total Coliforms Yearly Geometric Mean (cfu/100 mL)
		Spring Turnover	Yearly Mean		
ROS-1	3.8	4.5	6.0		



Note: Grubbs test indicates no outliers in the spring and annual total phosphorus data.



In 2021, the spring phosphorus concentrations at the deep-water station (ROS-1) were below the historic DMM threshold of 6.2 µg/L and Provincial Water Quality Monitoring Objectives for Protection Against Aesthetic Deterioration (10 µg/L) and Nuisance Algal Growth (20 µg/L). Average annual Secchi disk depth (3.8 m) was consistent with previous monitoring (3.1 – 5.65 m). **HESL recommends ongoing sampling to continue to monitor for long-term trends and emerging issues.**