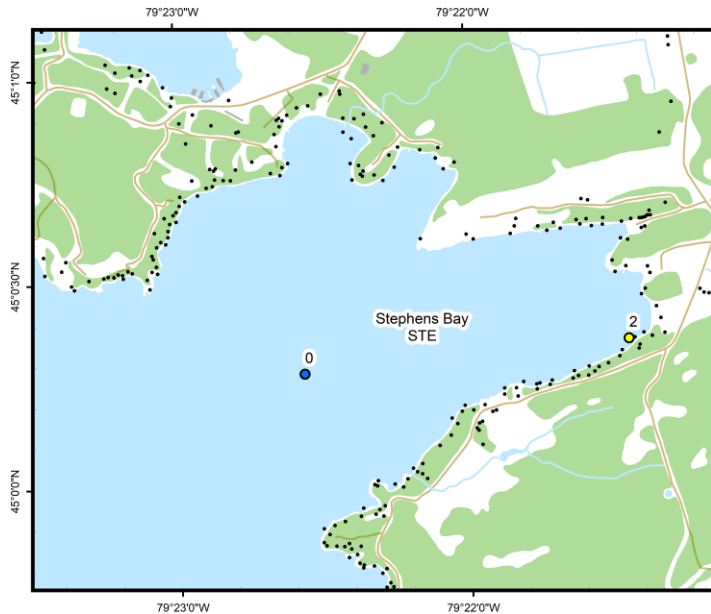


Stephens Bay (STE)



Area Description:

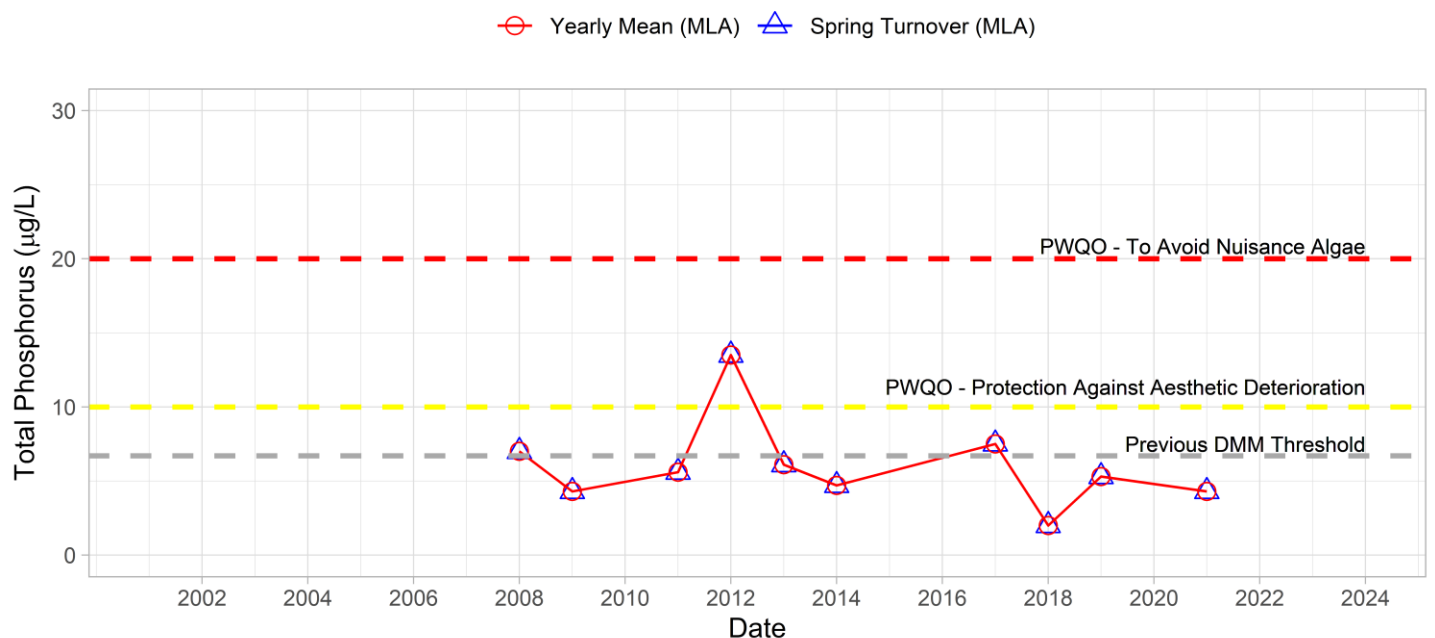
Stephen's Bay is located south of the mouth of the Muskoka River, in the central part of eastern Lake Muskoka. Land use within the watershed area of Stephen's Bay includes input from adjacent wetlands as well as agricultural lands in the east, and two public beaches (Strawberry Bay and Kirby's). Shoreline development in the bay is high. MLA monitoring of Stephen's Bay began in 2013.

Volunteer Recognition: Donna & Walter Ried, Louise Hammond, Louise Cragg.

2021 Water Quality Results:

	Mean Secchi Disk (m)	Total Phosphorus ($\mu\text{g/L}$)		E. coli Yearly Geometric Mean (cfu/100mL)	Total Coliforms Yearly Geometric Mean (cfu/100 mL)
		Spring Turnover	Yearly Mean		
STE-0	4.0	4.3			
STE-2		5.1			

Phosphorus at STE-0



Note: Grubbs test indicates data collected in 2012 are considered an outlier



Hutchinson
Environmental Sciences Ltd.



The spring phosphorus concentration at the deep-water station (STE-0) in 2021 was marginally above the historic DMM threshold of 6.7 $\mu\text{g/L}$ and Provincial Water Quality Monitoring Objectives for Protection Against Aesthetic Deterioration (10 $\mu\text{g/L}$) and Nuisance Algal Growth (20 $\mu\text{g/L}$). Nearshore monitoring of spring phosphorus concentrations at STE-2 began in 2019, phosphorus concentration in 2021 was marginally higher but similar to 2019, ongoing monitoring at the STE-2 site will inform of long-term trends in phosphorus concentrations. Average annual Secchi disk depth (4.0 m) was consistent with previous monitoring (2.0 – 4.4 m). **HESL recommends ongoing sampling to continue to monitor for long-term trends and emerging issues.**