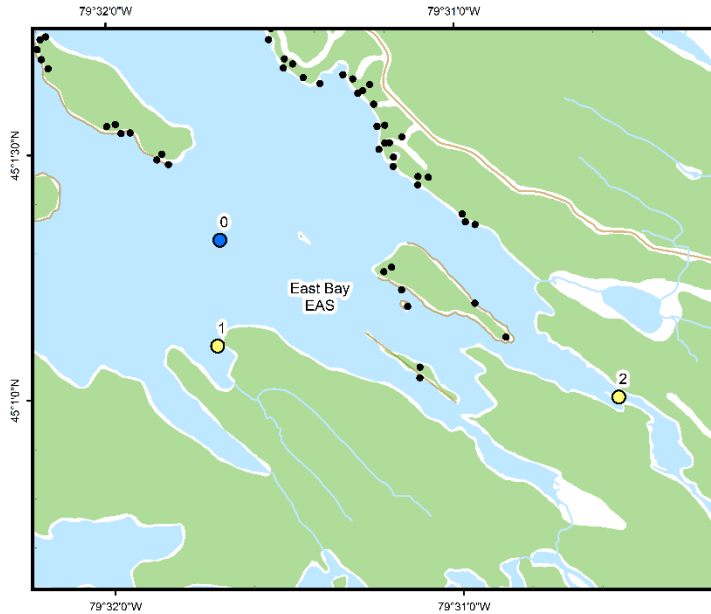




East Bay (EAS)



Area Description:

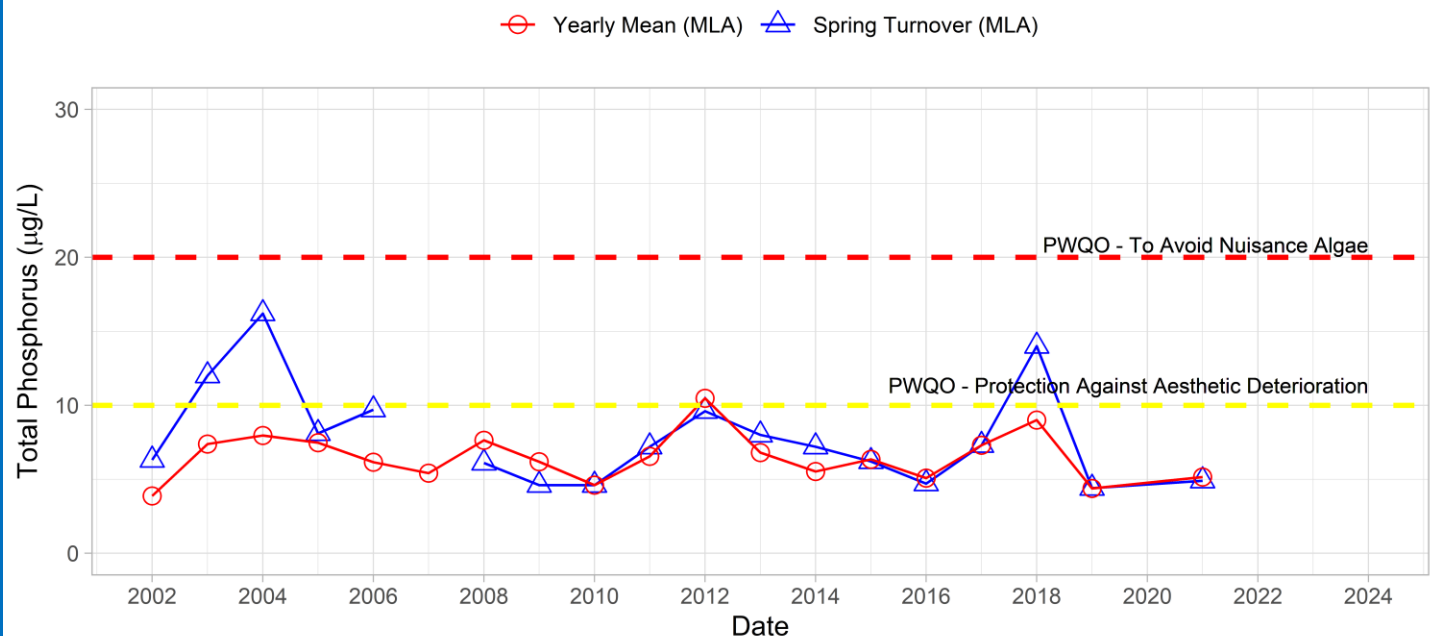
East Bay is part of Hardy Lake Provincial Park located in the western part of Lake Muskoka. Shoreline development in the Bay is low compared to other locations on Lake Muskoka, with few cottages/residences and limited road access. Five creeks flow into the bay through wetland areas of the Provincial Park in the southeast. MLA monitoring of East Bay began in 2002.

Volunteer Recognition: Jan Getson, Jeff Hall, Louise Cragg.

2021 Water Quality Results:

	Mean Secchi Disk (m)	Total Phosphorus ($\mu\text{g/L}$)		E. coli Yearly Geometric Mean (cfu/100mL)	Total Coliforms Yearly Geometric Mean (cfu/100 mL)
		Spring Turnover	Yearly Mean		
EAS-0	3.7	4.9	5.1		
EAS-2		7.4	8.5		
EAS-4		3.6	5.2		

Phosphorus at EAS-0



Note: Grubbs test indicates no outliers in Spring or Annual Total Phosphorus data.



Hutchinson
Environmental Sciences Ltd.



Annual average and spring phosphorus concentrations at the deep-water station (EAS-0) were below Provincial Water Quality Monitoring Objectives for Protection Against Aesthetic Deterioration (10 µg/L) and Nuisance Algal Growth (20 µg/L). Nearshore monitoring of annual and spring phosphorus concentrations at EAS-2 and 4 were within the range of variability of previous monitoring years. Average annual Secchi disk depth (3.7 m) was consistent with previous monitoring (2.6 – 5.5 m). **HESL recommends ongoing sampling to continue to monitor for long-term trends and emerging issues.**