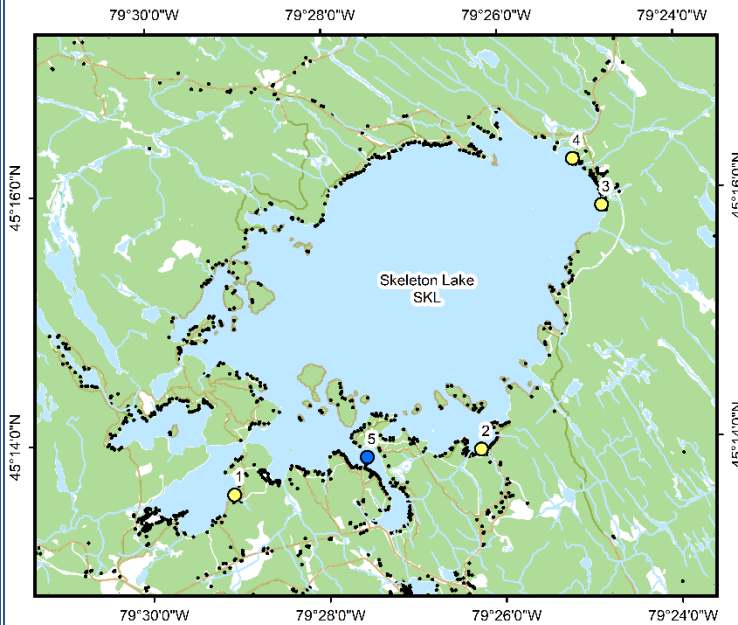


Skeleton Lake (SKL)



Area Description:

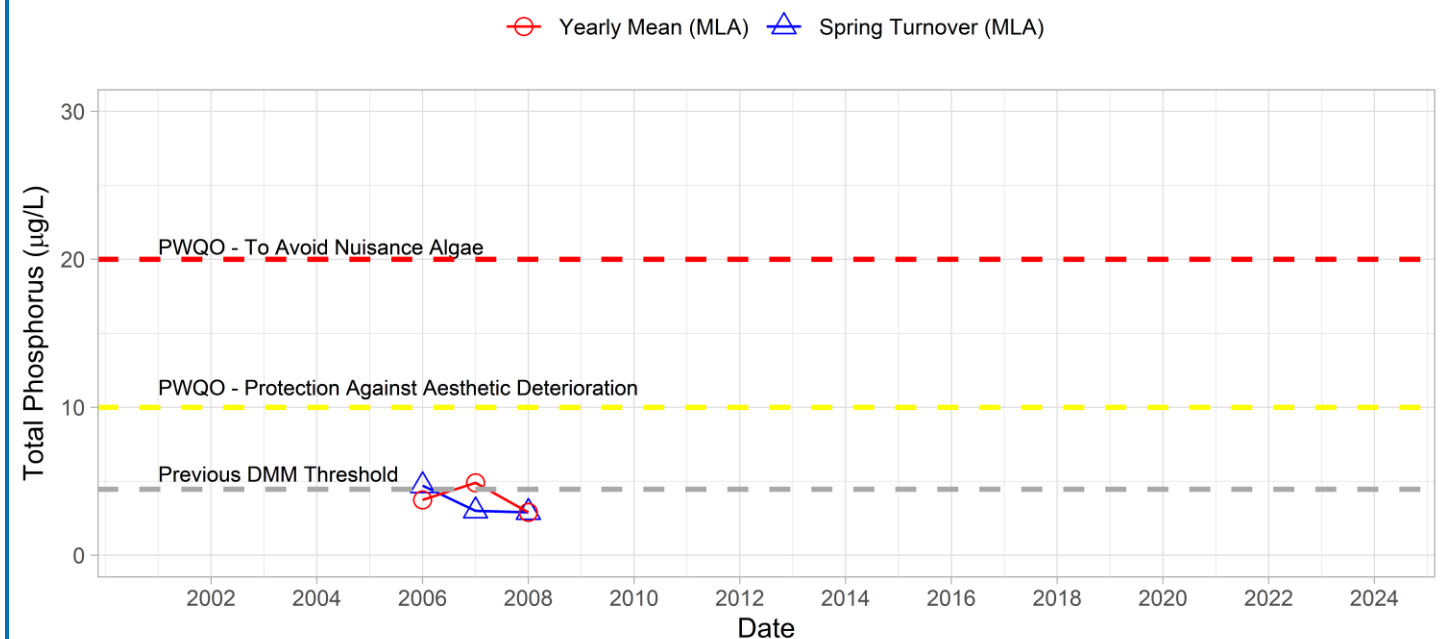
Skeleton Lake is large lake located east of Lake Rosseau and North of Three Mile Lake. It has a surface area of 20.54 km² in area and a maximum depth of 60 m. Skeleton Lake receives drainage from a 46.68 km² watershed. Skeleton Lake is not currently listed as vulnerable by the DMM. MLA monitoring of Skeleton Lake began in 2006 but ended in 2008, sampling resumed in 2021 and is the first sampling event by the MLA since 2008.

Volunteer Recognition: Jan Hunter & Tony Shersky

2021 Water Quality Results:

	Mean Secchi Disk (m)	Total Phosphorus (µg/L)		E. coli Yearly Geometric Mean (cfu/100mL)	Total Coliforms Yearly Geometric Mean (cfu/100 mL)
		Spring Turnover	Yearly Mean		
SKL-1	4.5	3.0	3.8		
SKL-2	4.1	3.0	3.8		
SKL-3	4	4.2	3.8		
SKL-4	4.1	3.4	3.4		

Phosphorus at SKL-5



Note: Grubbs test indicates no spring or annual average phosphorus data collected are considered outliers.



Annual average and spring phosphorus concentrations at the deep-water station (SKL-5) was not sampled in 2021. Nearshore monitoring of annual and spring phosphorus concentrations at SKL1, 2, 3, and 4 was the first phosphorus sampling in the MLA database. *E. coli* samples were not collected in 2021 at Skeleton Lake. **HESL recommends ongoing sampling to enable the assessment of long-term trends and emerging issues. If sampling of Skeleton Lake continues monitoring the historical long-term monitoring station (SKL-5), where some previous data are available, is recommended. The MLA WQI from 2008 lists SKL-5 as a deep-water station, however based on the location of SKL-5 it is not a deep-water station, if long-term deep-water monitoring of Skeleton Lake is desired a revised deep-water station could be established by HESL and the Environment Committee.**