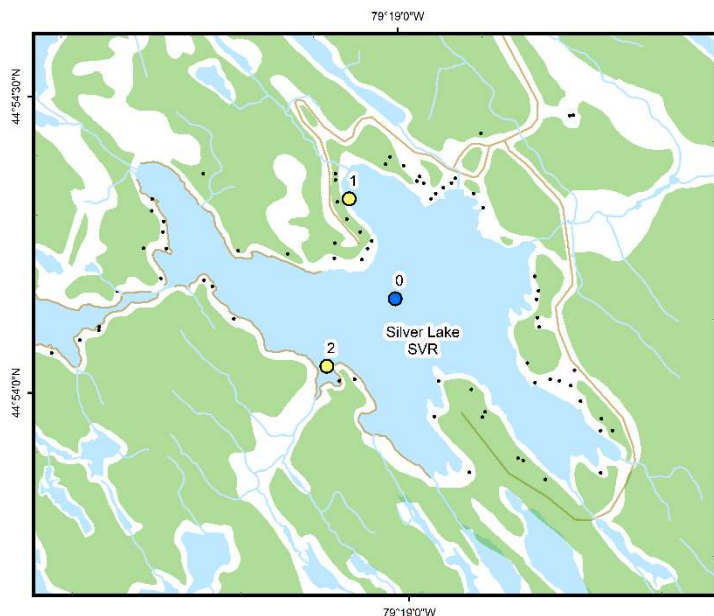




## Silver Lake (SVR)



### Area Description:

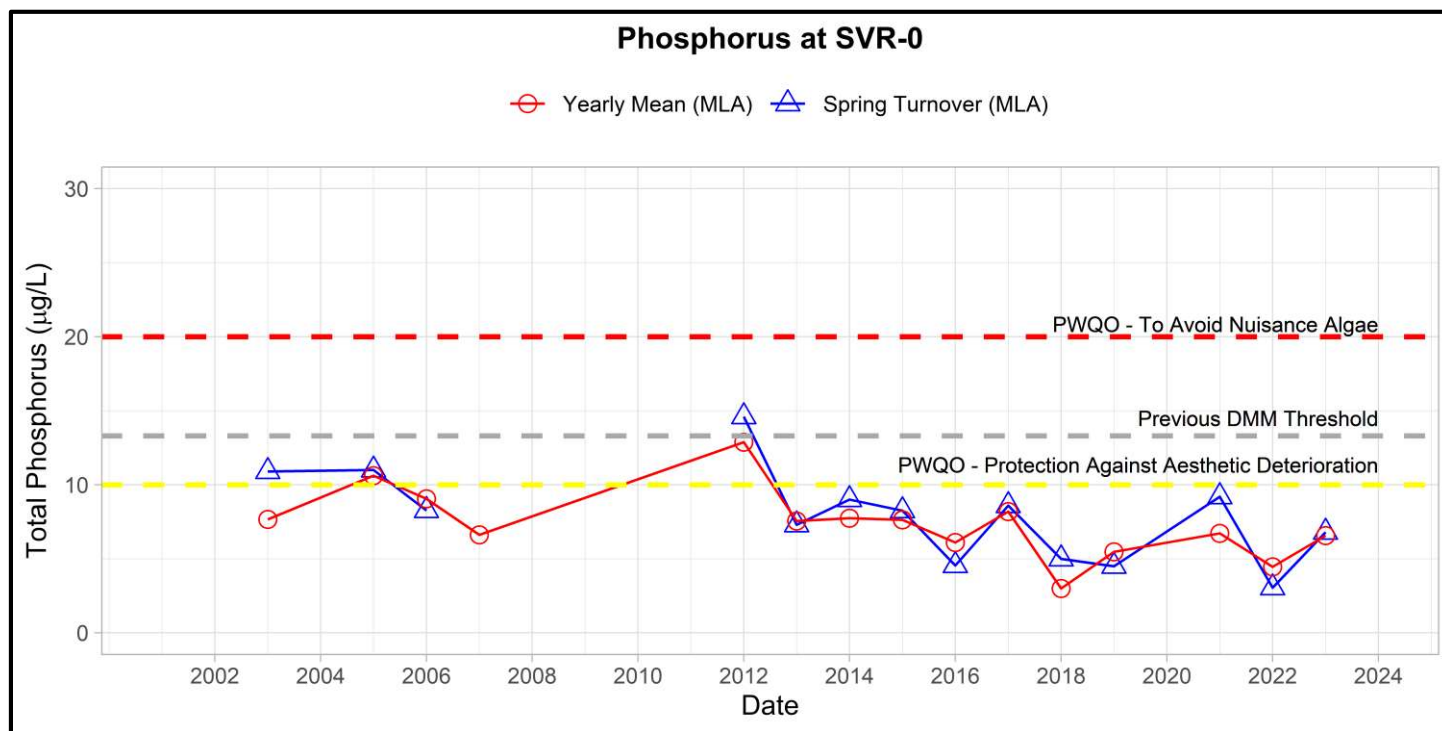
Silver Lake is located at the south end of Gull Lake and has a surface area of 0.58 km<sup>2</sup> in area and a maximum depth of 14 m. Silver Lake receives drainage from an 8.22 km<sup>2</sup> watershed via thirteen rivers and streams. The lake is primarily developed on the north and east shorelines and there is a navigable outlet into Gull Lake in the northwest. Silver Lake is not currently listed as vulnerable by the DMM. MLA monitoring of Silver Lake began in 2003.

Volunteer Recognition: Bruce & Anne Elliot, Dave & Debbie Stephens, George & Patricia Catleogh.

### 2023 Water Quality Results:

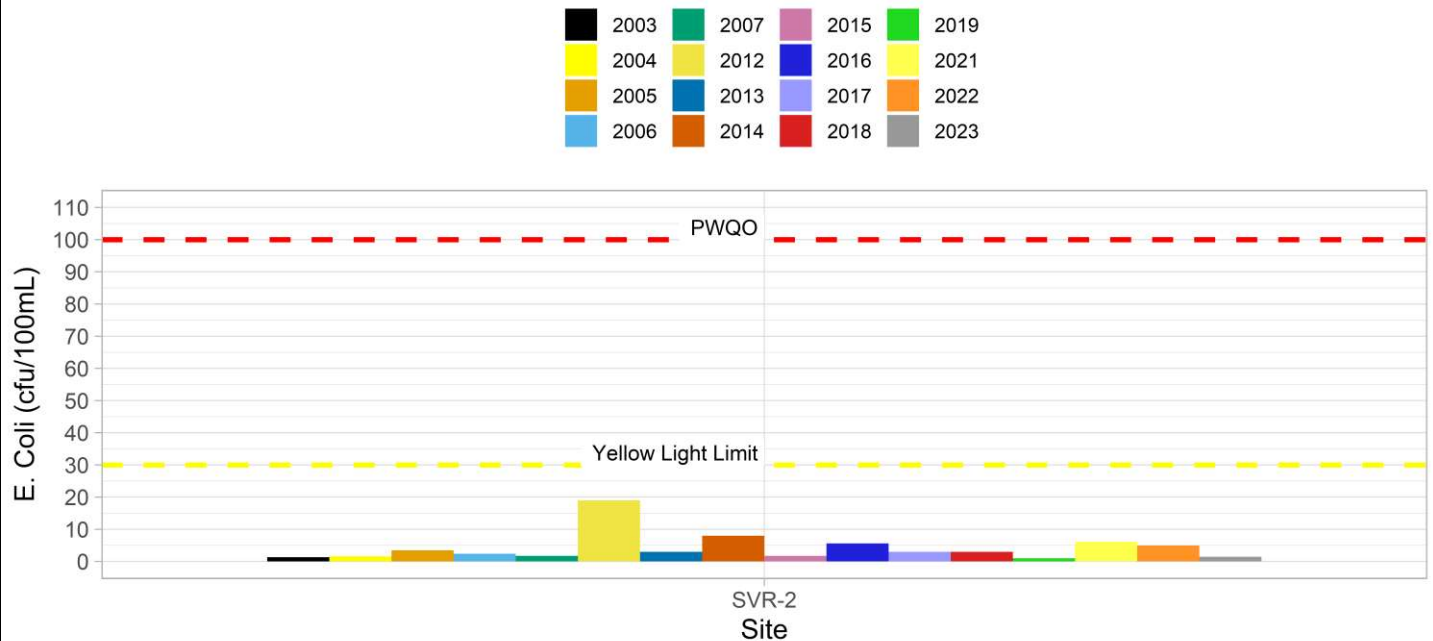
	Mean Secchi Disk (m)	Total Phosphorus (µg/L)		E. coli Yearly Geometric Mean (cfu/100mL)	Total Coliforms Yearly Geometric Mean (cfu/100 mL)
		Spring Turnover	Yearly Mean		
SVR-0	2.1	6.8	6.6		
SVR-2				1	95

Note: Grubbs test indicates no spring or annual average phosphorus data collected are considered outliers.





### E. Coli Annual Geometric Mean at Silver Lake (Gravenhurst)



Annual average and spring phosphorus concentrations at the deep-water station (SVR-0) were below the historic DMM threshold of 13.3 µg/L and Provincial Water Quality Monitoring Objectives for Protection Against Aesthetic Deterioration (10 µg/L) and Nuisance Algal Growth (20 µg/L). *E. coli* samples collected in 2023 at SVR-2 were below the MLA stoplight limit. Average annual Secchi disk depth (2.1 m) was consistent with previous monitoring (2.0 and 4.5 m). **HESL recommends ongoing sampling to continue to monitor for long-term trends and emerging issues.**