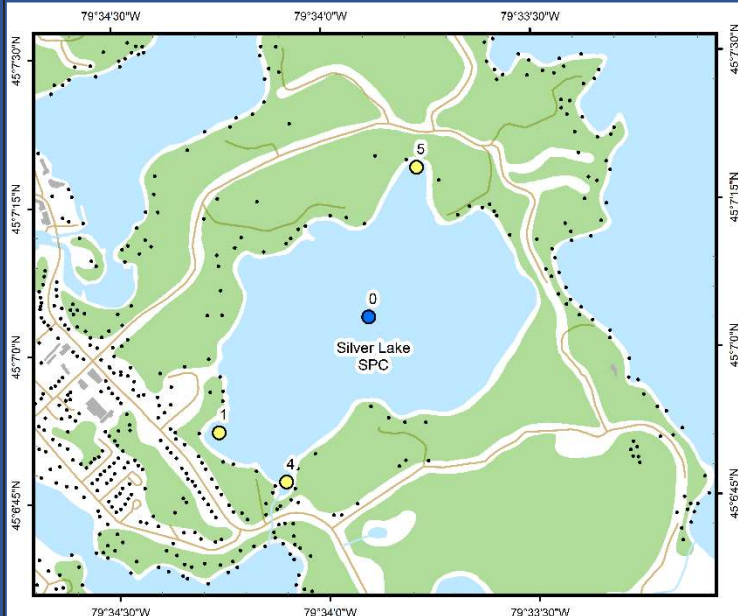




Silver Lake (SPC)



Area Description:

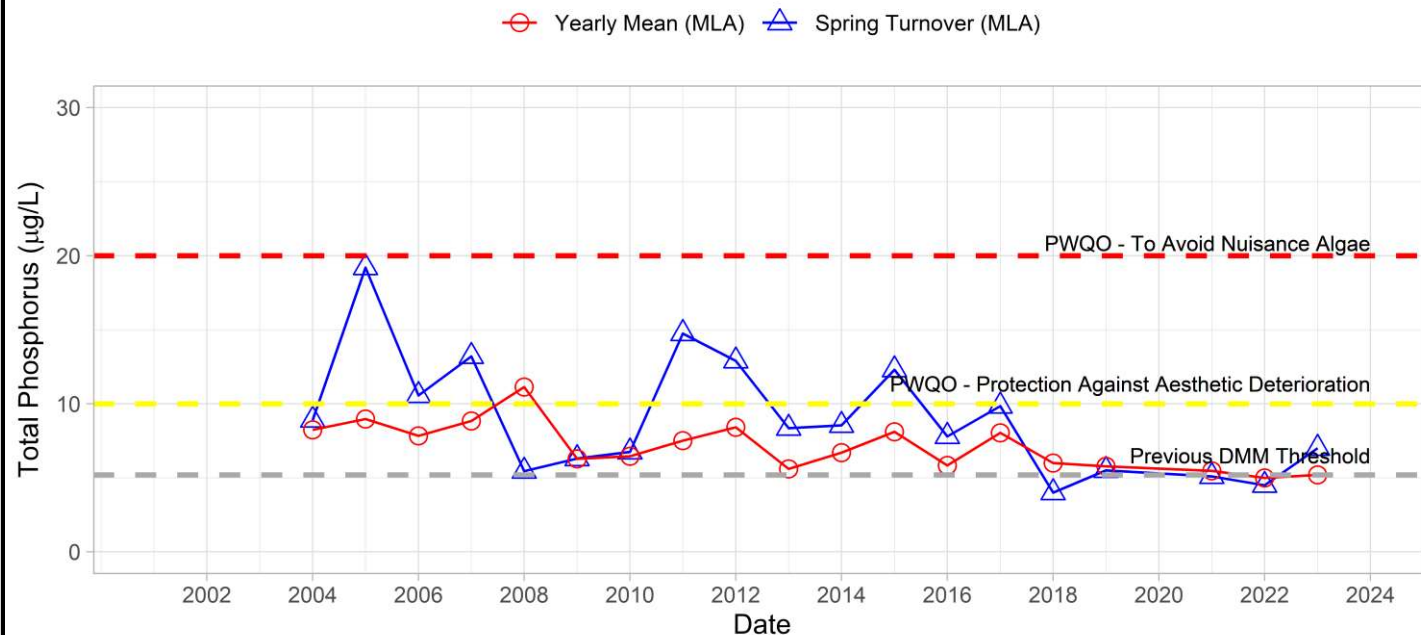
Silver Lake is a small lake (surface area = 0.56 km²) with a maximum depth of 14 m just east of Port Carling and west of Arthurlie Bay. The lake has a small watershed area (0.59 km²) and is moderately developed with residential properties. Thinned forest accounts for approximately 50% of the upland area, however 90% of the shoreline is in a natural state. Drainage from Port Carling enters the lake in the southwest and a single outlet drains from the lake in the south. Silver Lake is not currently listed as vulnerable by the DMM.

Volunteer Recognition: Barbara Graydon, Matthew Graydon, Mike Graydon and Johnathan Graydon

2023 Water Quality Results:

	Mean Secchi Disk (m)	Total Phosphorus (µg/L)		E. coli Yearly Geometric Mean (cfu/100mL)	Total Coliforms Yearly Geometric Mean (cfu/100 mL)
		Spring Turnover	Yearly Mean		
SPC-0	5.2	7.0	5.2		
SPC-1				1	24
SPC-4				4	37
SPC-5				2	49

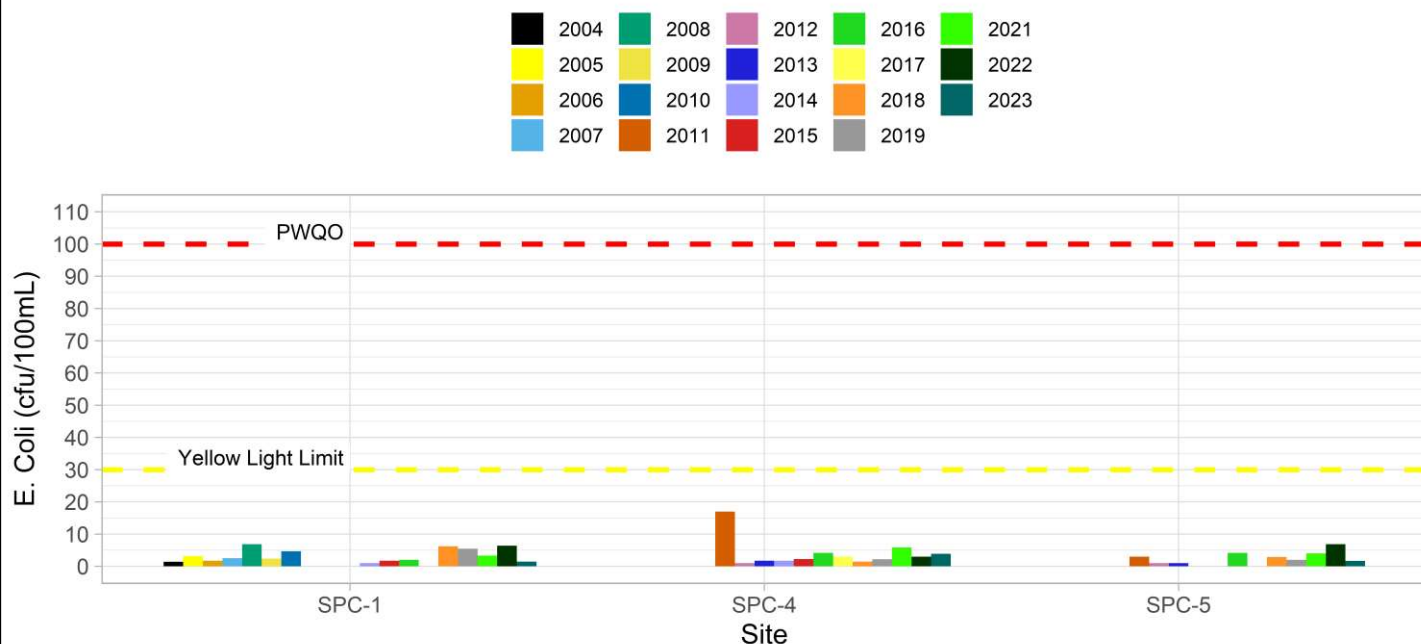
Phosphorus at SPC-0



Note: Grubbs test indicates no spring or annual phosphorus data collected are considered outliers.



E. Coli Annual Geometric Mean at Silver Lake (Port Carling)



Annual average phosphorus concentrations at the deep-water station (SPC-0) were at the historic DMM threshold of 5.2 µg/L but, along with spring phosphorus concentrations, fell below Provincial Water Quality Monitoring Objectives for Protection Against Aesthetic Deterioration (10 µg/L) and Nuisance Algal Growth (20 µg/L). *E. coli* counts were below the MLA stoplight limits at all nearshore sites. Average annual Secchi disk depth (5.2 m) was consistent with previous monitoring (2.0 and 7.5 m). Silver Lake experienced a cyanobacterial bloom in 2020 but as no blooms have occurred in the past 3 year it has been changed to green. **HESL recommends ongoing sampling to continue to monitor for long-term trends and emerging issues.**