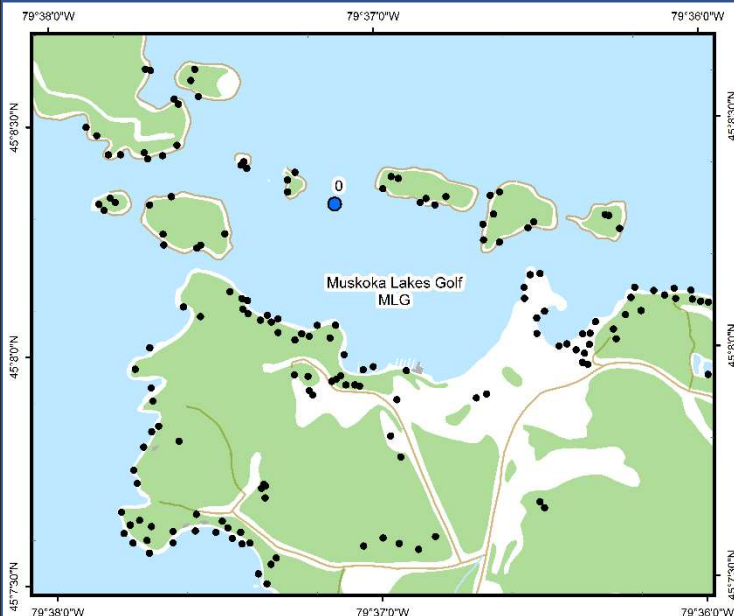




## Muskoka Lakes Golf (MLG)



### Area Description:

The Muskoka Lakes Golf & Country Club near the Town of Port Carling, along the southern shore of Lake Rosseau's main basin. The bay receives run-off from a golf course area which includes an associated clubhouse and marina. The bay also contains a large wetland that drains into the lake. The northwest winds result in substantial wave action along the southern shoreline of the bay.

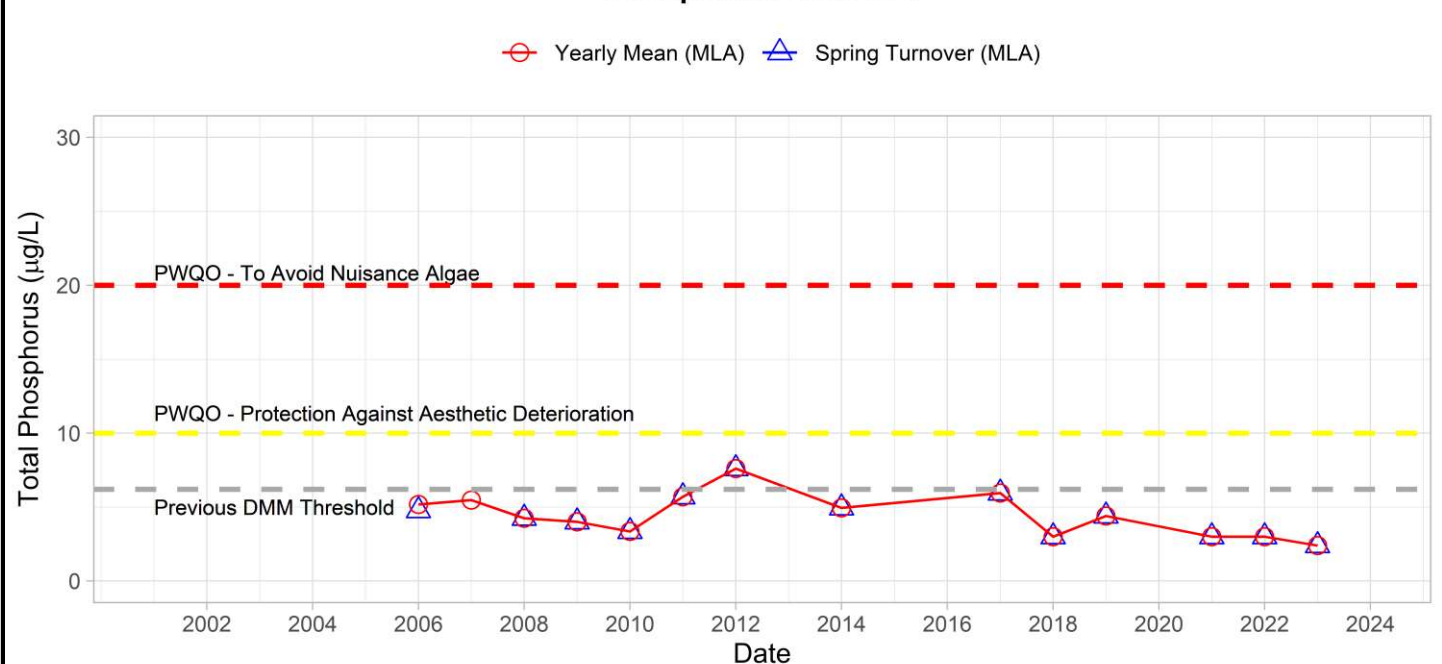
Volunteer Recognition: Dianne & Ian Turnbull.

### 2023 Water Quality Results:

	Mean Secchi Disk (m)	Total Phosphorus ( $\mu\text{g/L}$ )		E. coli Yearly Geometric Mean (cfu/100mL)	Total Coliforms Yearly Geometric Mean (cfu/100 mL)
		Spring Turnover	Yearly Mean		
MLG-0	3.6	2.4			

Note: Grubbs test indicates no Spring and Annual Total Phosphorus data were outliers.

### Phosphorus at MLG-0





Hutchinson  
Environmental Sciences Ltd.



In 2023, the spring phosphorus concentrations at the deep-water station (MLG-0) was below the historic DMM threshold of 6.2 µg/L and Provincial Water Quality Monitoring Objectives for Protection Against Aesthetic Deterioration (10 µg/L) and Nuisance Algal Growth (20 µg/L). Average annual Secchi disk depth (3.6 m) was consistent with previous monitoring (3.0 – 5.5 m). **HESL recommends ongoing sampling to continue to monitor for long-term trends and emerging issues.**