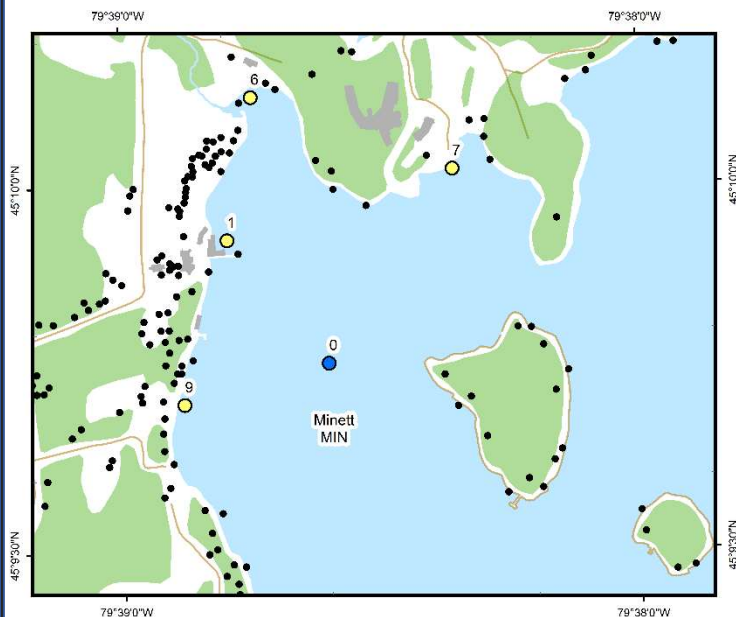




Minett (MIN)



Area Description:

The village of Minett is in western Lake Rosseau and includes high intensity development. The sampling area contains two large resorts with golf courses, several roads, a marina, and many private residential properties thus a substantial number of nearshore monitoring locations are included in the MLA sampling program. MLA monitoring in at Minett began with the original program in 2003.

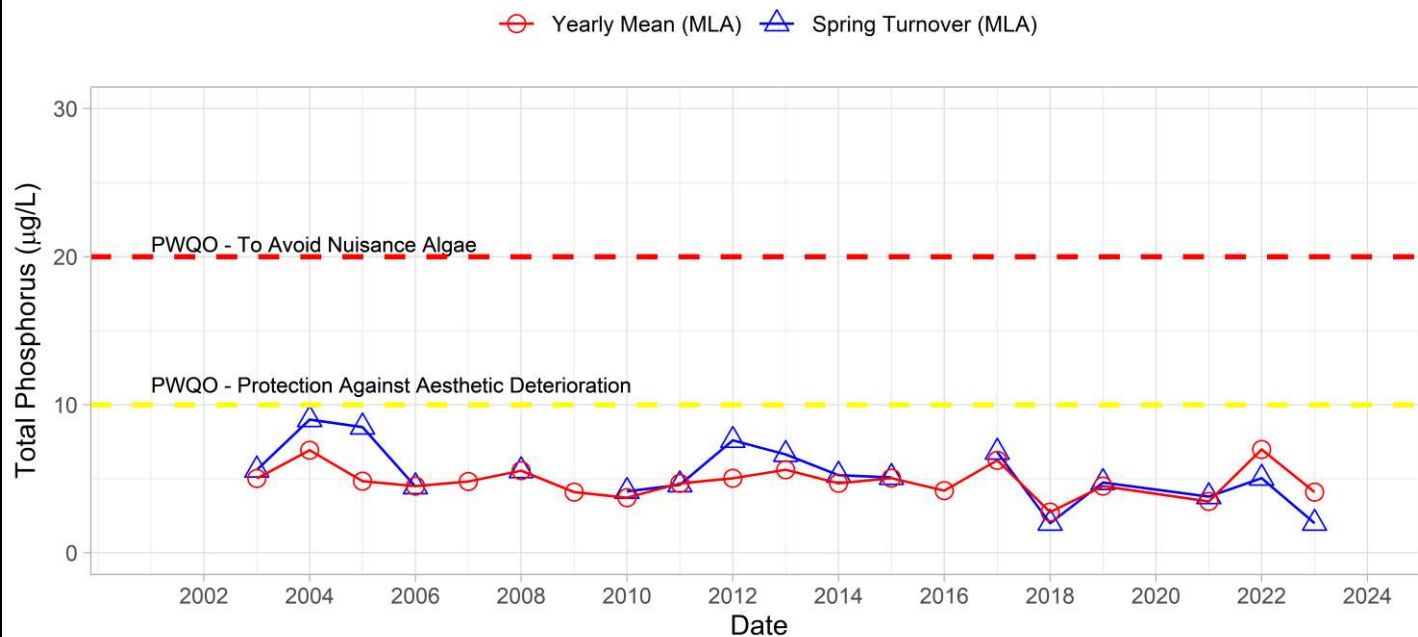
Volunteer Recognition: Laurie Thomson and Greg Thomson.

2023 Water Quality Results:

	Mean Secchi Disk (m)	Total Phosphorus ($\mu\text{g/L}$)		E. coli Yearly Geometric Mean (cfu/100mL)	Total Coliforms Yearly Geometric Mean (cfu/100 mL)
		Spring Turnover	Yearly Mean		
MIN-0	3.8	2.0	4.1		
MIN-1			4.7	45	315
MIN-6			10.8	34	521
MIN-7			7.2	11	92
MIN-9			4.1	71	618

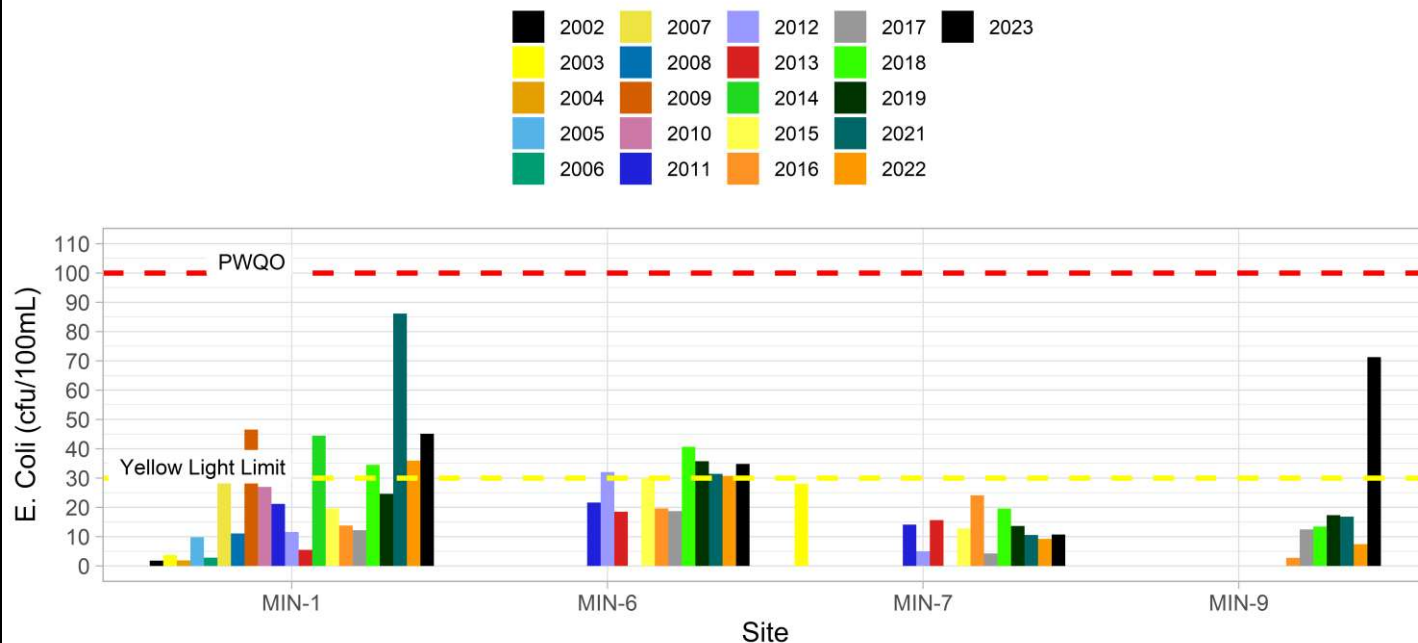


Phosphorus at MIN-0



Note: Grubbs test indicates data collected in 2012 are considered an outlier

E. Coli Annual Geometric Mean at Minett





Hutchinson
Environmental Sciences Ltd.



Annual average and spring phosphorus concentrations at the deep-water station (MIN-0) were below Provincial Water Quality Monitoring Objectives for Protection Against Aesthetic Deterioration (10 µg/L) and Nuisance Algal Growth (20 µg/L). Nearshore monitoring of annual average and spring phosphorus concentrations at MIN-1, 7 and 9 were within the range of variability of previous monitoring years. Monitoring at MIN-6 again indicated elevated total phosphorus relative to other nearshore stations. *E. coli* counts at stations MIN-1, MIN-6 and MIN-9 were above the MLA stoplight limits, resulting in a yellow stop light for Minett. Average annual Secchi disk depth (3.8 m) was consistent with previous monitoring (1.31 – 5.75 m). **HESL recommends ongoing sampling to continue to monitor for long-term trends and emerging issues.**