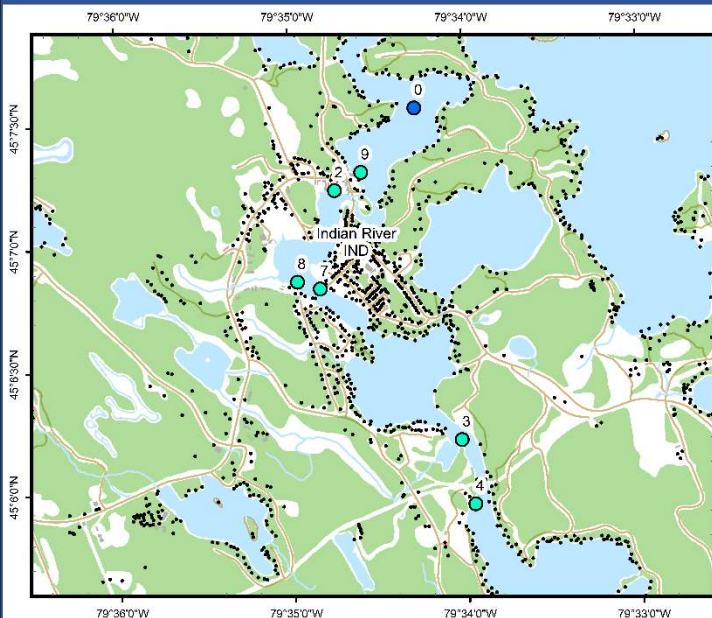




Indian River (IND)



Area Description:

The Indian River connects Lake Rosseau to Mirror Lake and Lake Muskoka. The river flows through and receives stormwater drainage from the urbanized area of Port Carling, which is highly developed. It also has a locks system, several marinas and numerous commercial and residential properties. A large wetland is located adjacent to the river. MLA monitoring of the Indian River began in 2002.

Volunteer Recognition: Jane Armstrong, Susan Carson, Ian Turnbull, Dianne Turnbull, and Chris Vandergrift.

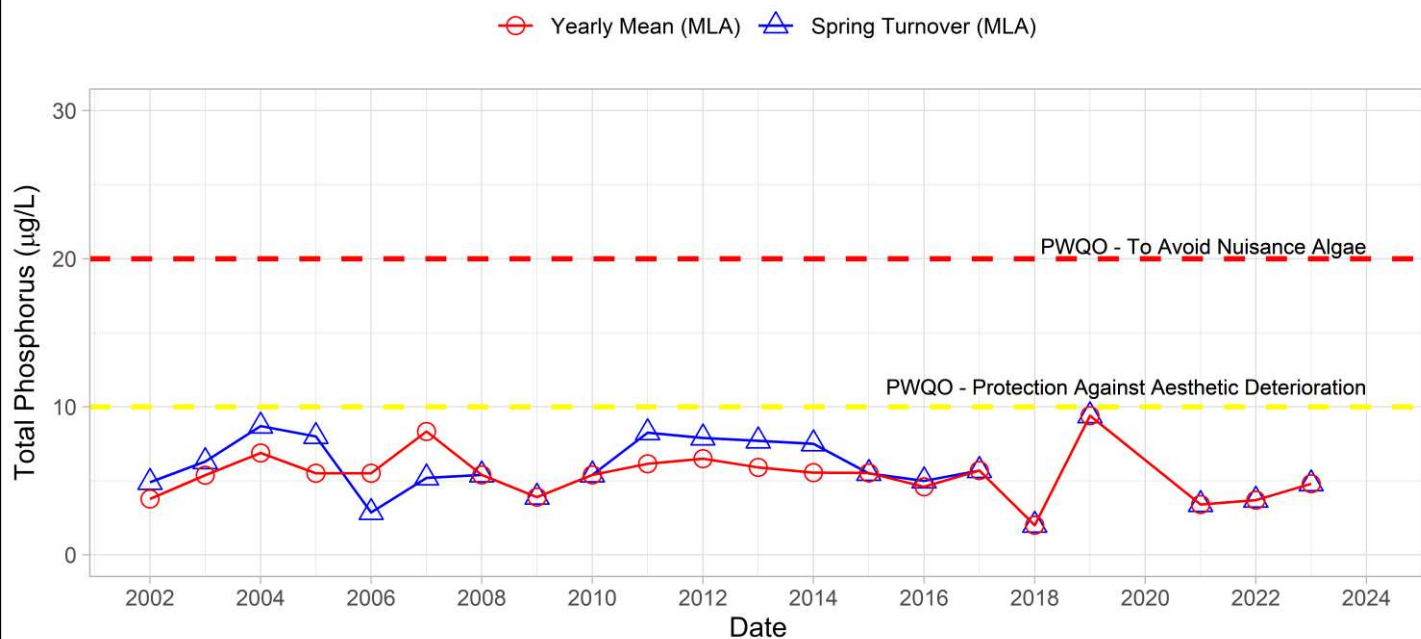
2023 Water Quality Results:

	Mean Secchi Disk (m)	Total Phosphorus (µg/L)		E. coli Yearly Geometric Mean (cfu/100mL)	Total Coliforms Yearly Geometric Mean (cfu/100 mL)
		Spring Turnover	Yearly Mean		
IND-0	3.4	4.8			
IND-2				13	125
IND-3				6	49
IND-4				10	69
IND-7		4.8	10.0(4.6*)	6	16
IND-8		3.8		11	122
IND-9		2.0		2	33

*Annual average presented both with and without extreme June 2023 value.

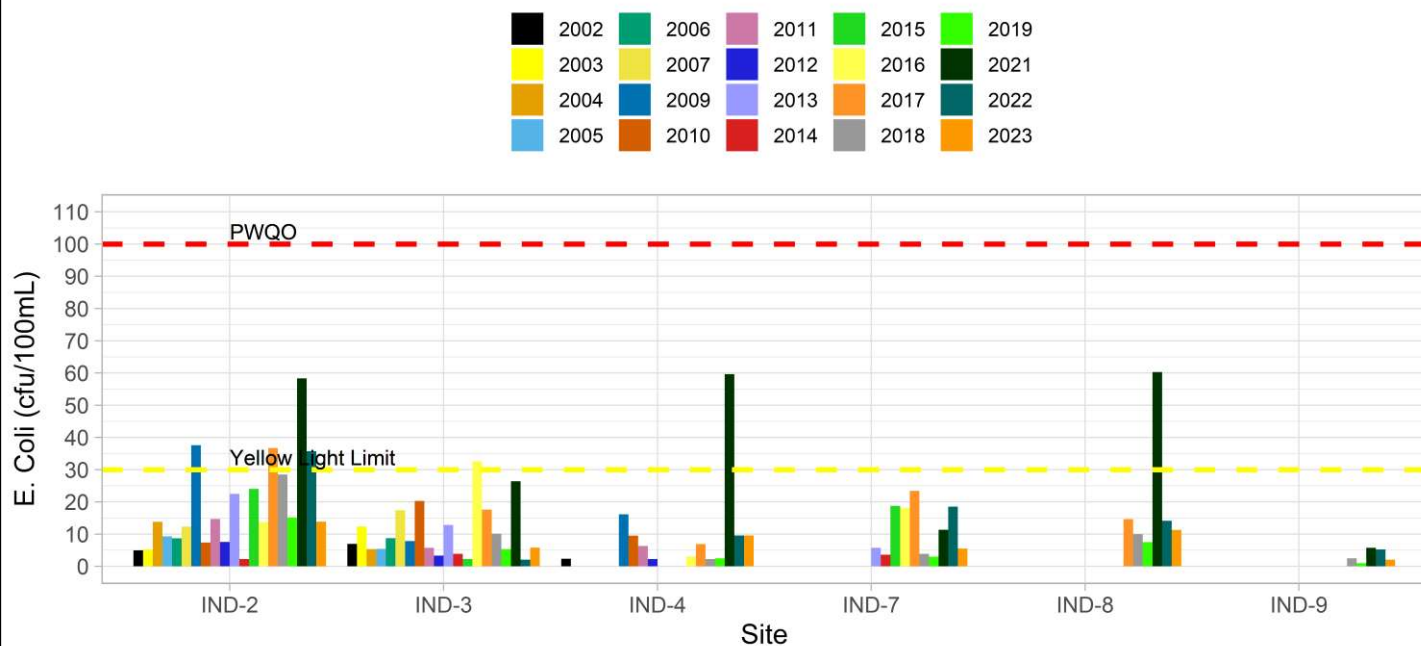


Phosphorus at IND-0



Note: Grubbs test indicates data collected no outliers in the spring or annual average phosphorus data.

E. Coli Annual Geometric Mean at Indian River





Hutchinson
Environmental Sciences Ltd.



In 2023, annual average and spring phosphorus concentrations at the deep-water station (IND-0) were below Provincial Water Quality Monitoring Objectives for Protection Against Aesthetic Deterioration (10 µg/L) and prevention of Nuisance Algal Growth (20 µg/L). Nearshore monitoring of spring phosphorus concentrations at IND-7, 8 and 9 were within the range of variability of previous monitoring, annual average total phosphorus concentrations at IND-7 were elevated in 2023 relative to 2022 due to a single sample collected during a precipitation event. *E. coli* counts at all nearshore stations were below the yellow light trigger established by the MLA. Average annual Secchi disk depth (3.4 m) was consistent with previous monitoring (2.0 – 5.6 m). **HESL recommends ongoing sampling to continue to monitor for long-term trends and emerging issues.**