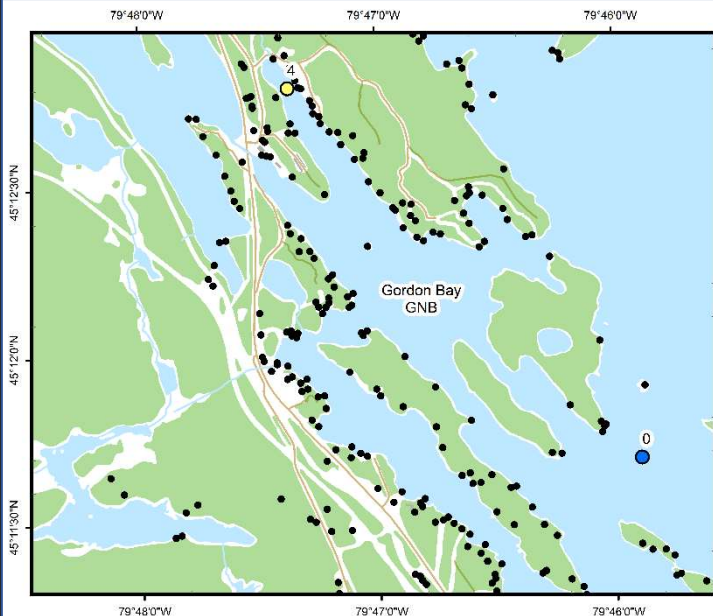




Gordon Bay (GNB)



Area Description:

Gordon Bay is a moderately developed region of northwestern Lake Joseph comprised of several smaller bays including Portage Bay, Smith Bay and King Bay. The area includes a large marina in Portage Bay and Lake Joseph Road in the West. MLA monitoring of Gordon Bay began in 2004.

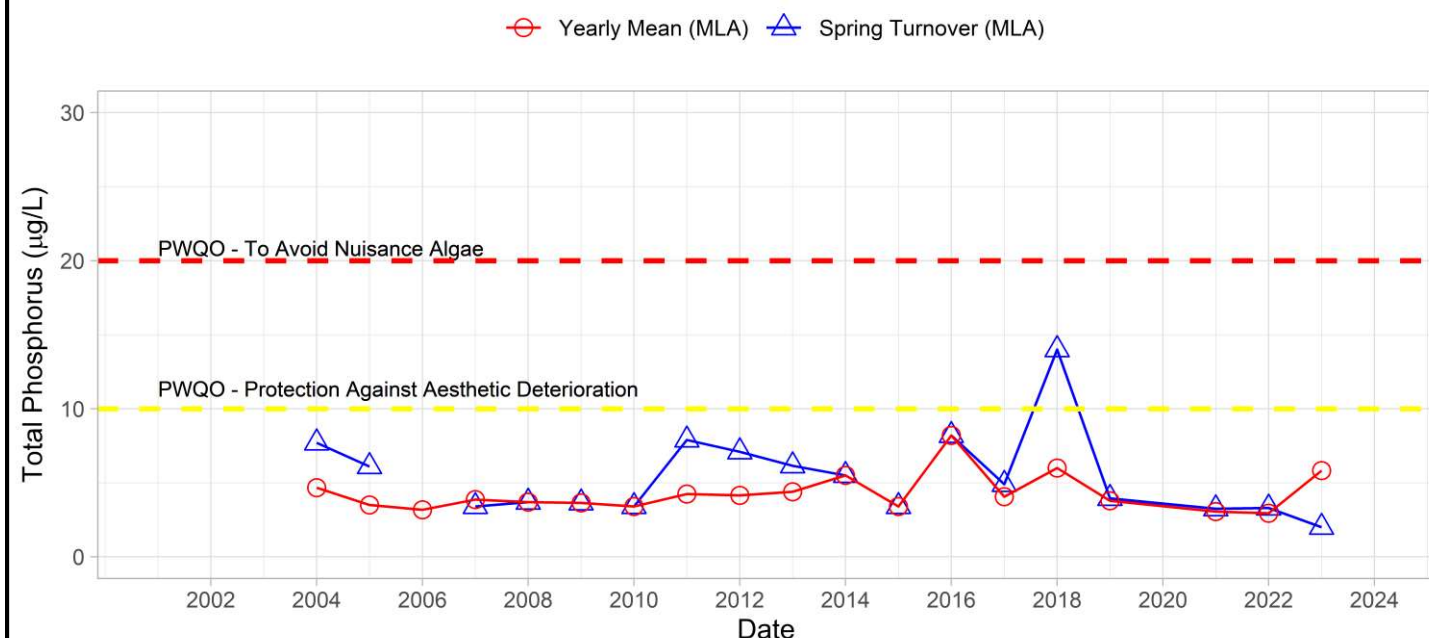
Volunteer Recognition: Alex Magditsch, Cecil Hayhoe.

2023 Water Quality Results:

	Mean Secchi Disk (m)	Total Phosphorus ($\mu\text{g/L}$)		E. coli Yearly Geometric Mean (cfu/100mL)	Total Coliforms Yearly Geometric Mean (cfu/100 mL)
		Spring Turnover	Yearly Mean		
GNB-0	5.3	2.0	5.8		
GNB-4		2.0	3.2		

Note: Grubbs test indicates 2018 spring TP concentration was an outlier.

Phosphorus at GNB-0





Hutchinson
Environmental Sciences Ltd.



The Grubb's test identified the spring 2018 phosphorus data (14.0 µg/L) for GNB-0 as an outlier, it will be maintained in the data set but should be interpreted with caution. In 2023, spring total phosphorus concentrations were below Provincial Water Quality Monitoring Objectives for Protection Against Aesthetic Deterioration (10 µg/L) and Nuisance Algal Growth (20 µg/L). Nearshore monitoring of spring phosphorus concentrations at GNB-4 was elevated relative to 2022 but within the range of variability of previous monitoring years. Average annual Secchi disk depth (5.3 m) was consistent with previous monitoring (3.0 - 7.5 m). *E. coli* sampling was discontinued at GNB-4 in 2019. **HESL recommends ongoing sampling to continue to monitor for long-term trends and emerging issues.**