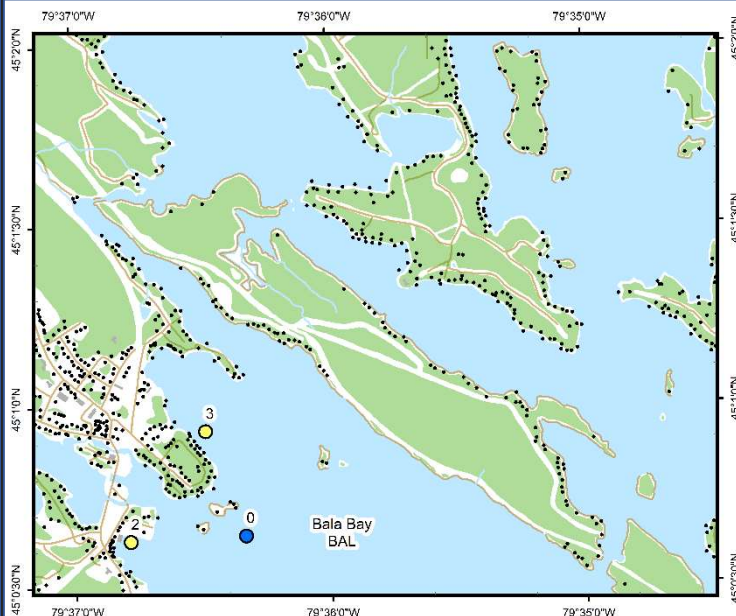




## Bala Bay (BAL)



### Area Description:

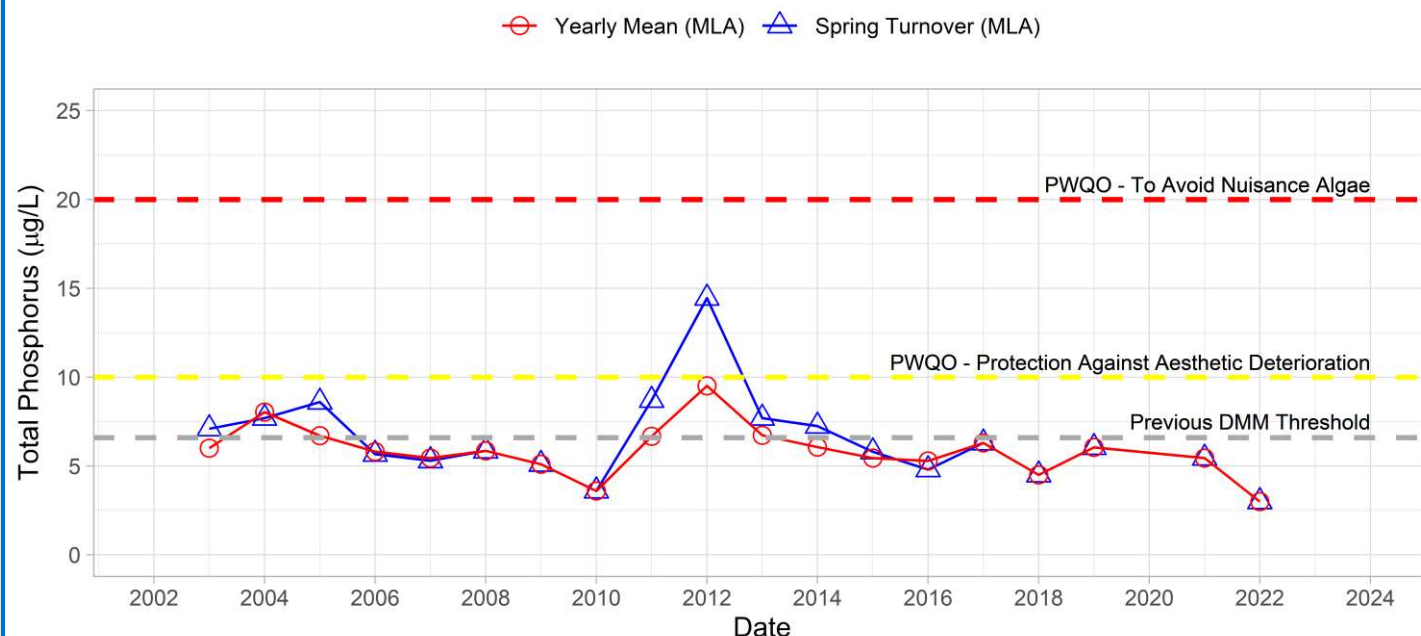
Bala Bay is a large bay in the eastern part of Lake Muskoka, which is largely isolated from the rest of the lake by Wanilah and Bala Park Islands. Much of the bay is densely developed however, forest cover remains intact along most shoreline areas. The Village of Bala is located on the western shore of the bay. Bala Bay is the main outflow point of the Muskoka River Watershed which drains through Bala Bay and into the Moon River. There are also two small wetlands that drain into the bay. MLA monitoring of Bala Bay began in 2003.

Volunteer Recognition: Peter Joel and Alan Hutton.

### 2023 Water Quality Results:

	Mean Secchi Disk (m)	Total Phosphorus ( $\mu\text{g/L}$ )		E. coli Yearly Geometric Mean (cfu/100mL)	Total Coliforms Yearly Geometric Mean (cfu/100 mL)
		Spring Turnover	Yearly Mean		
BAL-0	3.5	-			
BAL-2				6	7
BAL-3				2	10

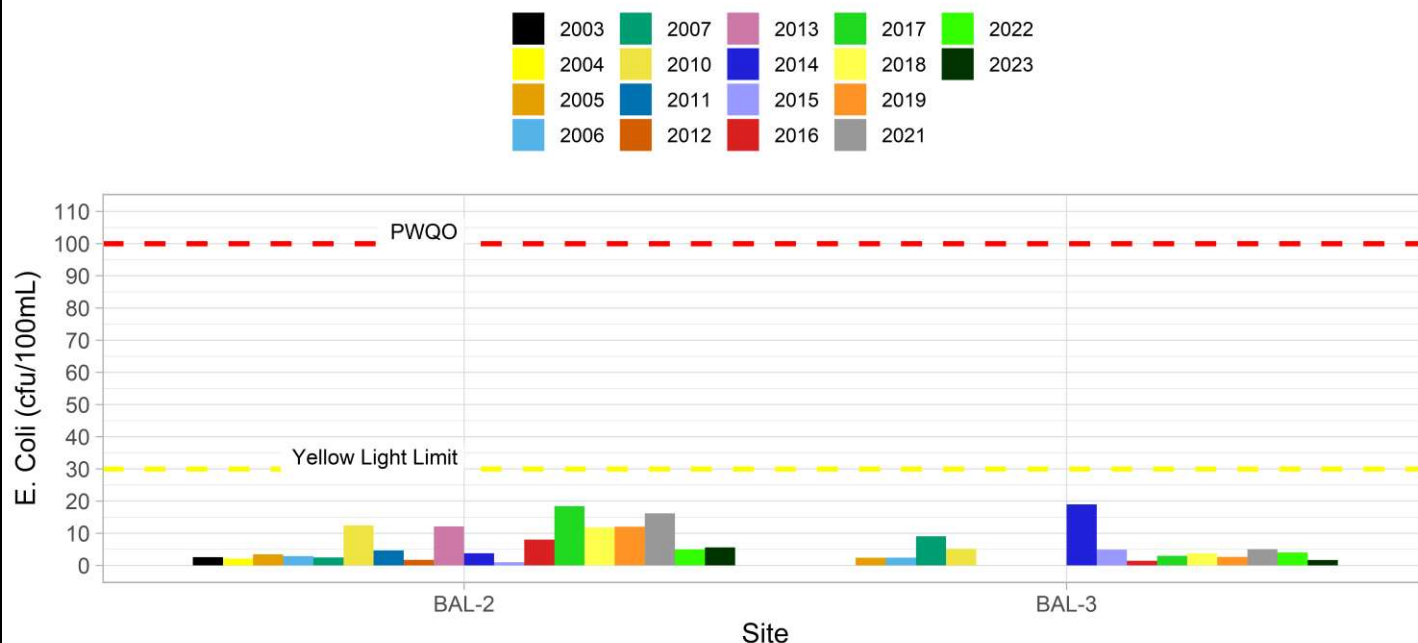
### Phosphorus at BAL-0



Note: Grubbs test indicates spring total phosphorus data collected in 2012 was considered an outlier.



### E. Coli Annual Geometric Mean at Bala Bay



Spring total phosphorus concentrations were not collected in 2023. Nearshore monitoring of *E. coli* concentrations at BAL-2 and 3 were within the range of variability of previous monitoring years, and below MLA trigger concentrations. Average annual Secchi disk depth (3.5 m) was consistent with previous monitoring (2.5 – 5.3 m). **HESL recommends ongoing sampling to continue to monitor for long-term trends and emerging issues.**