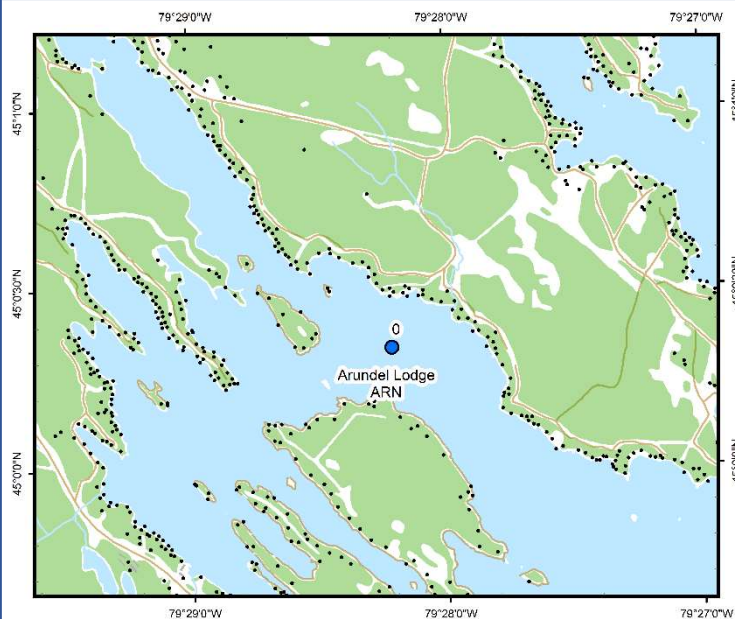




Arundel Lodge (ARN)



Area Description:

The Arundel Lodge sampling area in south-central Lake Muskoka is east of Hardy Lake Provincial Park and south of Walker's Point. The ARN-0 sampling station is located in Skinner Bay, adjacent to Miller and Firebrand Islands. A small creek, which drains three wetland areas outlets northeast of the ARN-0 site. MLA monitoring at Arundel Lodge began in 2008.

Volunteer Recognition: Carol Hoskins, Sheila Robinson, George Fallis, Stephen Sims, Mark & Sandy Brosch.

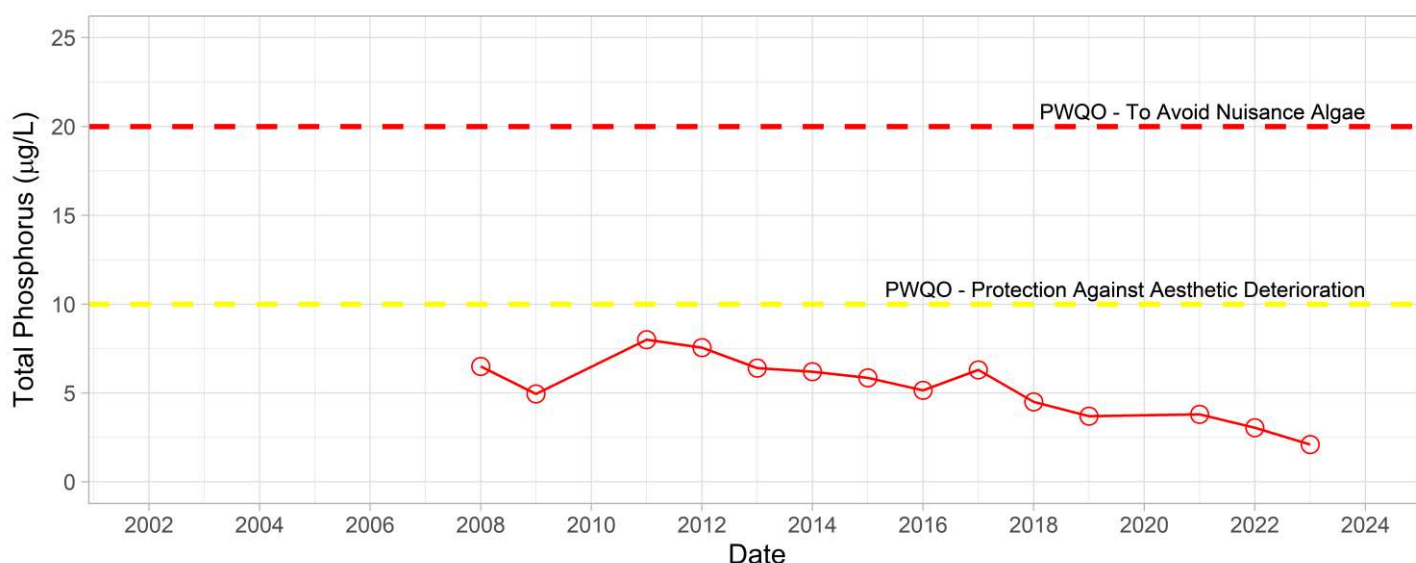
2023 Water Quality Results:

	Mean Secchi Disk (m)	Total Phosphorus ($\mu\text{g/L}$)		E. coli Yearly Geometric Mean (cfu/100mL)	Total Coliforms Yearly Geometric Mean (cfu/100 mL)
		Spring Turnover	Yearly Mean		
ARN-0	3.2	2.1			

Note: Grubbs test indicates data collected in 2012 are considered an outlier

Phosphorus at ARN-0

○ Yearly Mean (MLA)





Hutchinson
Environmental Sciences Ltd.



In 2023, spring total phosphorus concentrations remained consistent with the range of variability measured since the program began in 2008. All measured phosphorus concentrations were below Provincial Water Quality Monitoring Objectives for Protection Against Aesthetic Deterioration (10 µg/L) and Nuisance Algal Growth (20 µg/L). Average annual Secchi disk depth (3.2 m) was consistent with previous monitoring (2.4 – 3.5 m). **HESL recommends ongoing sampling to continue to monitor for long-term trends and emerging issues.**